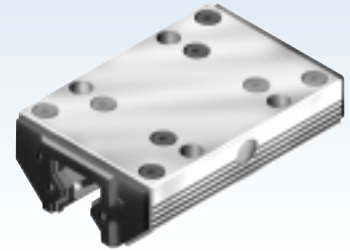


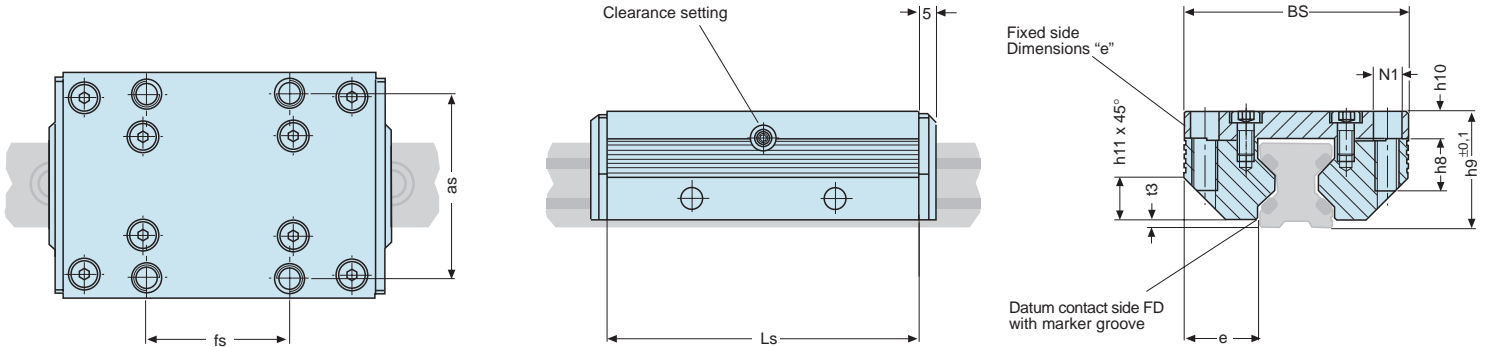


Aluminium Guide Standard



Series FDA

LINEAR MOTION SYSTEMS LTD



Size	Load rating		Moment load rating				Dimensions			other dimensions cassette							Weight Cassette	Order number Cassette	
	C	Co	Mocx	Mcx	Mocy/Mocz	Mcy/Mcz	Ls	Bs	h9	as	fs	e	h8	h10	h11	t3			N1
12	2800	3000	27	25	43	40	64	37	19	30	25	12,50	8	4,0	6	1,4	M4	0,1	FDA12
15	4200	3400	37	45	58	72	78	47	24	38	30	15,75	10	5,0	8	2,0	M5	0,3	FDA15
20	5400	5400	76	76	111	111	92	63	30	53	40	21,00	12	7,0	11	2,0	M6	0,4	FDA20
25	9000	10100	158	142	222	198	98	70	36	57	45	23,50	16	8,5	13	2,5	M8	0,6	FDA25
35	12500	18000	423	294	559	388	135	100	48	82	62	34,00	20	10,5	20	3,5	M10	1,5	FDA35
45	21200	25900	827	678	983	806	165	120	60	100	80	37,50	24	13,5	22	4,0	M12	2,9	FDA45

Dimensions [mm], Load rating, Moments [Nm], Weight [kg]

Consists of:

- Aluminium body
- 8 rollers in needle bearings
- Plastic plate on both front sides with felt seal
- (metal wipers optional)

Features:

- Maximum load capacity, smooth and silent running
- 45° - position of the rollers for loads from all directions
- Clip-on wipers with felt seal (metal wipers optional)
- Adjustable preload
- High dynamic load capacity
- Endless stroke lengths by coupling of rails
- Calculation program to find the best suitable guide size
- Our calculation program can assist with selection
- We are gladly prepared to calculate the guide size for you.

Traverse speed:

- Traverse speed up to 10 m/s
- Acceleration up to 40 m/s²

Temperature range:

- 20° up to +100°C, short time operation +120°C

Lubrication:

- Maintenance-free due to lifetime-lubrication with grease Shell Retinax LX2

Fastening:

- with screws quality 8.8, tightening moments see Technical information
- Cassette with 4 fastening screws

Adjustment/Preload:

- Easy adjustment by threaded pin on the adjusting side of the cassette.
- Adjustment of pair of roller shoes by included adjustment plate and threaded pin. Recommended slide resistance see diagr. 1. The adjustment should always be done without wipers.

Running accuracy:

- The running accuracy in diagr. 3 refers to a rail length of one meter.

Stiffness:

- With pairs of single rails the stiffness refers to one pair of single rails with one pair of roller shoes (see diagr. 2).

